

# Filming Toolkit

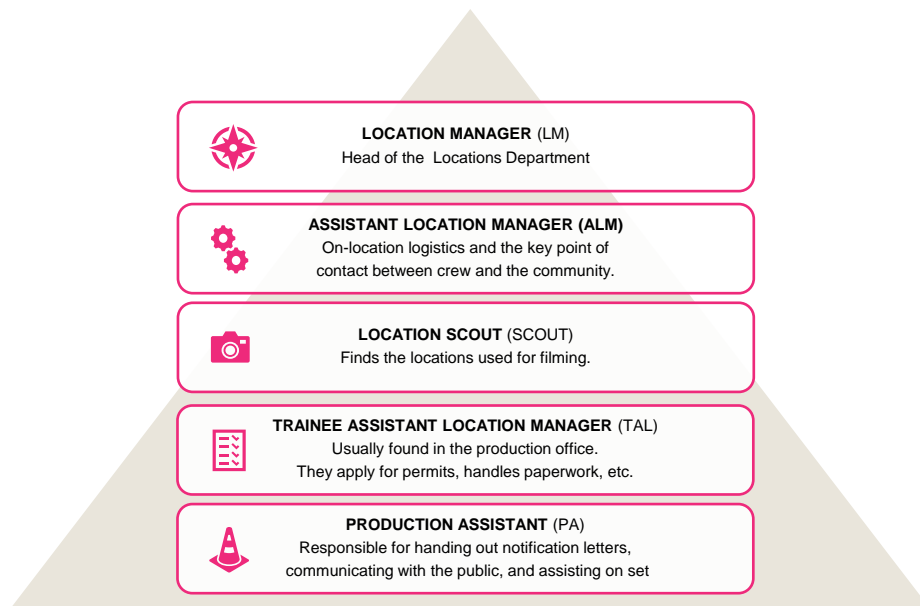
B.C.'s motion picture industry collaborates with the communities in which it works when filming on location. We invite you to familiarize yourself with the information in this resource.

HOMEOWNERS  
TENANTS  
NEIGHBOURS

## Who do I reach out to for questions or concerns?

Before and during filming, the **Assistant Location Manager** can help resolve problems quickly. Concerns after filming finishes should be directed to the **Location Manager**, or you can reach out to the [film liaison](#) in your municipality.

Contact information can be found on the notification letter you received prior to filming taking place. Alternatively, you can also reach out to the [Provincial Film Commission](#) at Creative BC.



## What is a polling letter?

The municipality may require a neighbourhood poll to gauge support if a production requests filming activity that requires a bylaw exemption or is considered more impactful (i.e. early/late hours, street closures, etc.).

If you have any questions or concerns about the proposed activity, communicate them to production with the contact information included.

## What are filming notifications?

Productions are required to distribute a notification letter detailing filming dates and activities prior to arriving in your neighbourhood.

We encourage you to keep the notification letter until after the production is wrapped, should you need to communicate with production for any reason.

# Filming Toolkit

HOMEOWNERS  
TENANTS  
NEIGHBOURS

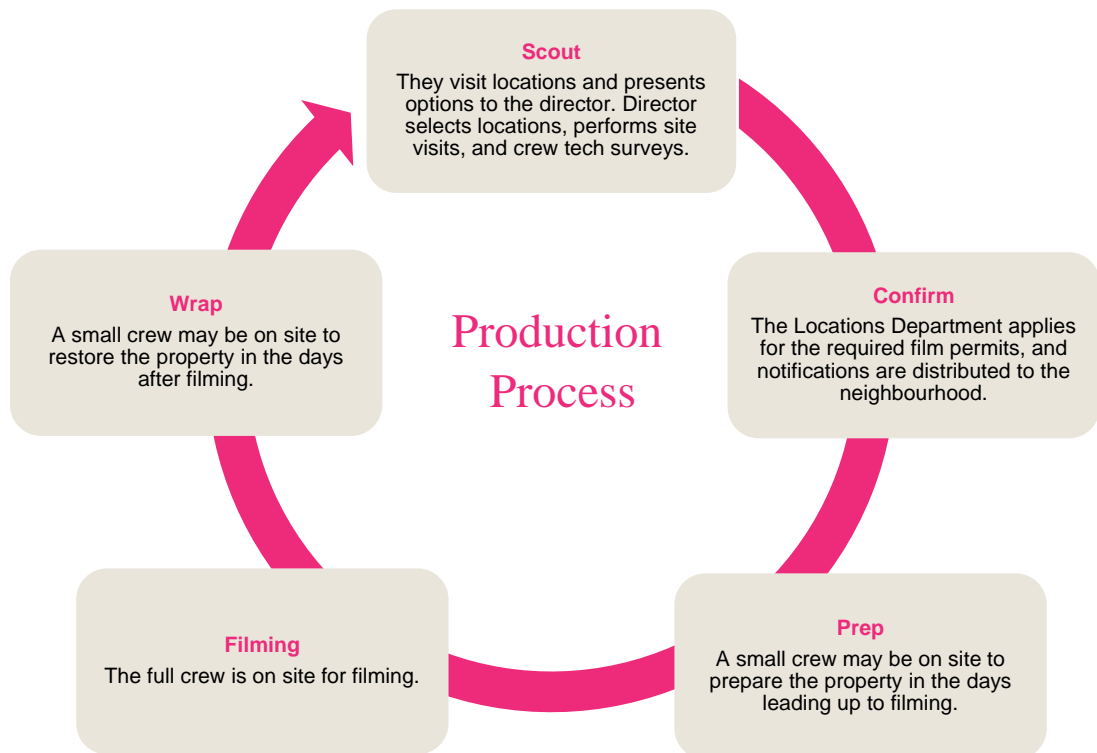
B.C.'s motion picture industry collaborates with the communities in which it works when filming on location. We invite you to familiarize yourself with the information in this resource.

## What are location contracts?

The location contract will discuss specific details such as areas of use; proposed alterations to property; smoking restrictions; packing, moving, and storage of personal belongings; and use of washrooms, water, electricity, etc. ahead of time and note them in an email or itemized proposal.

## What is the standard location use rate?

There is no standard location use fee for filming on your property. The location fee will vary based on impact to the homeowner and property, number of days requested, special requests, etc.



## Do I need insurance?

The production company will have insurance and can provide you with proof of coverage.

## How do I host filming on my property?

If you are interested in having filming on your property, start by registering your property in the [Creative BC Locations Library](#). Productions use the library to source locations that fit the look called for in the script. The library is password protected and accessible only by vetted locations professionals.